



#### Pentair Offices in South East Asia

##### Singapore

390 Havelock Road  
#04-01 King's Centre  
Singapore 169662  
Tel: +6567685900

##### Philippines

5th Floor MAIA Suites  
1747 Nicanor Garcia Street corner  
D.Oliman Street Makati City, Philippines  
Tel: +632824 3825

##### Thailand

16th Floor, The Ninth TowersGrand RAMA 9,  
Tower B 33/4 Rama 9 Road, Huaykwang  
Bangkok 10310, Thailand  
Tel: +6621681092

[pentair.com](http://pentair.com)

All Pentair trademarks and logos are owned by Pentair. All other brands or product names are trademarks or registered marks of their respective owners. Because we are continuously improving our products and services, Pentair reserves the right to change specifications without prior notice.

Pentair is an equal opportunity employer.

00-00000 20/01 ©2020 Pentair. All Rights Reserved.

©Notice / " Ownership Statement



PENTAIR F-SERIES 3-STAGE Drinking  
Water Filtration System

## Advanced filtration systems for your home

Models: F1 MF, F2 UF



**86**  
YEARS  
Specialized In Water  
Purification



At Pentair, we believe the health of our world depends on reliable access to clean water. We deliver a comprehensive range of smart, sustainable water solutions to homes, business and industry around the world. Our industry leading and proven portfolio of solutions enables people, business and industry to access clean, safe water. Whether it's improving, moving, or enjoying water, we help manage the world's most precious resource. Smart, Sustainable Water Solutions. For Life.

## 3+3 Smart Ways to Enjoy Water



**Filtration Technology**  
Optimal filtration efficiency  
Targeted purification



**Smart and User-Friendly**  
Visual tracking including  
faucet reminder features



**Smooth Flow of Water**  
Composite cartridge  
High capacity - Enjoy clean  
water anytime



**Premium Quality**  
Excellent Performance with  
Trusted Technology



**Effortless Click-in Technology**  
Easy cartridge replacement



**Petite and Sleek**  
Compact and space-saving





# Pure



Optimal Filtration Efficiency through Targeted Filtration Technologies Health. **FOR LIFE.**

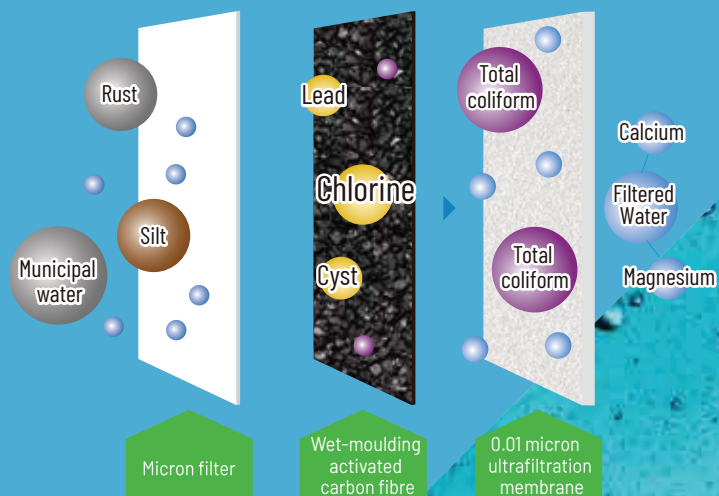
Optimal Filtration efficiency for family health

F1

High effectiveness in removing Chlorine, Taste and Odor  
Improves taste of drinking water for healthy and quality living

F2

Effective removal of potential pathogens\*  
Protection and care for the family, benefit young and old, and people who are prone to allergens



\* Filtration Illustration Taking F2 as Example

# Smart



Visual Tracking Including Faucet Reminder Features

Smart Solutions. **FOR LIFE.**

Smart LED & Dual Faucet reminder system  
Real-time display of water filtration status

## Smart LED Display

### On-screen status display

Lifespan of Cartridge: Display bars indicating lifespan usage of cartridges 1, 2 and 3

### Buzzer Alarm

"Beep-Beep-Beep": Three long beeps notify the need to replace cartridge

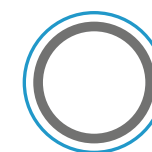


## Quality monitoring through ring light on the faucet

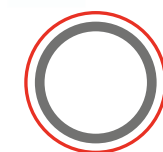
No need to peek into the cabinet! The ring light on the faucet indicates water quality standard and replacement of cartridges, offering better protection for safe drinking water.



**Blue light**  
Normal operation of cartridges



**Blue light (Flashing)**  
Impending expiration of cartridges



**Red Light (Always on)**  
Please replace cartridges



**Purple light**  
Please replace battery



# Smooth

**Composite Cartridge guarantees  
Smooth Flow of Water**

Pure Enjoyment. **FOR LIFE.**

**Instant filtration for drinking:  
Large capacity- water always available**  
FibreDyne® composite cartridge  
for excellent performance

## Activated Carbon Technology

### FibreDyne® Activated Carbon Technology

Pentair's wet-moulding fibre process is developed in-house, it effectively maintains the carbon's activity and porosity to enable high effectiveness in removing pollutants while retaining mineral components.

Filtration efficiency produces large flow capacity.

**5 Seconds  
to fill one glass\***

\* Based on F2 as example, filtered water flow rate is 2.5L/min; measured with a 200ml glass.

# Ease of Use

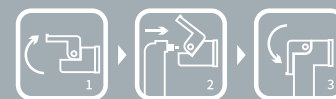
**Click-in Design for  
Ease of Replacement**

Innovation. **FOR LIFE.**

**Easy cartridge replacement: Effortless click-in technology**

## Click-in cartridge locking technology

No tools required: replace cartridge in 3 easy steps.  
Automatic click-in technology ensures cartridges fit in for safe filtration.  
Automatic water cut-off during cartridge replacement without the need to turn off supply valve and no concern on water leakage during replacement.



Double O-Ring Design

Rapid Cartridge  
Locking Structure

Embedded  
Cut-off valve





## Product Specifications and Performance

Model	F1	F2
Filtration Technology	Microfiltration	Ultrafiltration
Dimensions (mm),H*W*D	335*135*325	335*135*325
Filtered Water Flowrate ( L/min )	2.5	2.5
Capacity (L)	2500	6000
Inlet Water Condition	Chlorinated City Water	Chlorinated City Water
Inlet Water Pressure (PSI)	21 - 50	21 - 50
Operating Temp ( °C)	4°C ~ 38°C	4°C ~ 38°C
Inlet & Outlet Connection	3/8" Quick Connect	3/8" Quick Connect
Filtration Performance		
Sediment and ust particles above micron rating	•	•
Chlorine	•	•
Taste and Odor	•	•
Bacteriostatic	•	•
Cysts	•	•
Heavy Metals (e.g. Lead)	•	•
Volatile Organic Compounds (Chloroform)	•	
Bacteria		•
Monitoring System		
Faucet Light Indicator	•	•
Main Unit Screen Display	•	•
Beep Reminder	•	•
Replacement Cartridges		
Stage 1	PP Cartridge	PP Cartridge
Stage 2	Advanced Fibredyne™ Carbon Block	Advanced Fibredyne™ Carbon Block
Stage 3	Carbon Block	Ultrafiltration Cartridge

### NOTE:

- Due to continuous product improvement, technical specification subject to change without notice. Please refer to the product nameplate.
- Filtration performance was tested at Pentair lab.

# Compact

**Sleek and Petite - Blend in Well**  
**Precious Resource. FOR LIFE.**

**Compact and Space-saving**

